

solid square > T3

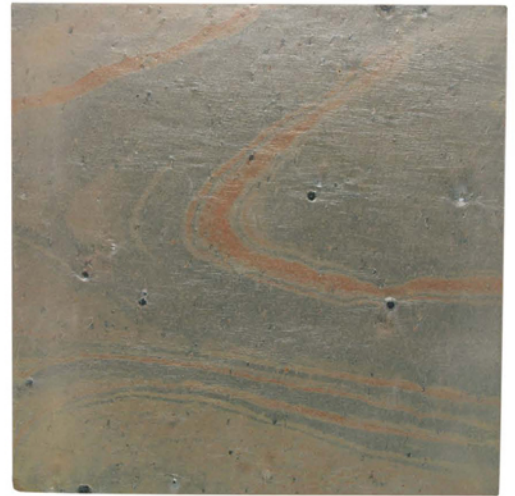
12.0" x 12.0" x 0.5"

tile surface > honed/split face

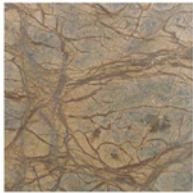
Indoors or outdoors, Island Stone's range of **Solid Square** tiles will make a truly individual design statement in any living space.

This range consists of tiles that are specifically chosen for colors and designs that reflect the warm, subtle shades of nature. They can be used to create a dramatic effect in a number of situations, whether as a feature wall, inlaid into a floor, bar or kitchen benchtop, or as a wall and/or floor tile for the most luxurious of showers.

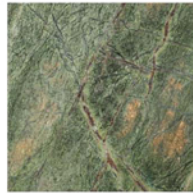
Precision manufactured to the highest standards, these tiles are ideal for larger areas. They can be used in conjunction with a variety of other Island Stone products, such as random tiles, mosaics and borders, to create some wonderful design effects.



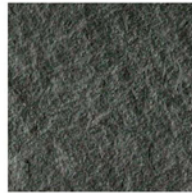
colors



FB >
forest marble brown



FG >
forest marble green



HB >
himachal black (split face)



HW >
himachal white (split face)



QC >
copper quartzitic slate



QS >
silver quartzitic slate



Please Read Carefully before Installing

mosaic & solid stone series

Island Stone's Mosaic & Solid Stone Series Tiles are designed for floors, counters, and wall applications. These tiles are manufactured with secure tile adhesion and durability in mind.

inspection

No two pieces of natural stone are exactly alike. Tiles must be inspected prior to installation to ensure that no blending is required.

No claims will be accepted by Island Stone after installation. Use of product implies acceptance.

substrate

All substrates should be firmly fixed, flat, clean, dry and free of contaminants. Deflection should be a maximum of 1/360th of the span for walls or floors. Wet areas require special attention involving appropriate substrates (e.g. concrete, compressed sheet, gib aqualine, H3 treated plywood), the use of reinforced waterproof membranes and, in the case of floors, a fall of the drainage point of not less than 1:60.

waterproof membranes

These prevent water from leaking through to sub-floor framing and/or habitable spaces below. Particular attention must be paid to carrying the membrane up the wall, outside shower boxes, installation of bond breakers and sealing around penetrations. It is strongly recommended that membrane systems are used in all wet areas

adhesive

Cement-based adhesives (thin-set) are generally suitable on masonry substrates where no movement is anticipated. Where slight movement could occur through thermal or pedestrian loads, a modified cement adhesive (probably 2-part) should be used as a minimum. It is important that each pebble is embedded in the adhesive. Select a product suitable For Application with a 1/4" notched trowel.

control joints

There are numerous reasons for building movement. Control joints are an effective way of minimizing potential damage, by dividing a larger tiled area into a series of smaller ones joints can be easily formed with two angles; sealant and bond breaker between them.

grout joints

Most tiles in the Mosaic and Solid Stone Series are grouted using the traditional 1/8" to 3/8" grout gap when laying ceramic tiles.

The interlocking Wave and Stack Mosaic Tiles are designed to achieve a no-joint look. For best visual results, the tiler must butt tiles together and not leave the

traditional grout gap when laying ceramic tiles.

grout

The grout, whether it is for external or internal use, should be suitable for joints up to 1/4" wide. Generally grouts are water-mix, but where some flexibility may be needed, then a latex additive should be used in place of or with water.

sealing

It is recommended that the stone tiles be sealed with a quality impregnator before and after grouting. For use in and around water, a water repelling sealer is recommended to ensure longevity. A color enhancer may be applied to bring out the true color of the stone at any time after grouting.

TCNA

All installations of Mosaic and Solid Stone Tile should meet or exceed the guidelines and specifications as outlined by the Tile Council of North America.

Refer to www.tileusa.com for information regarding these guidelines.